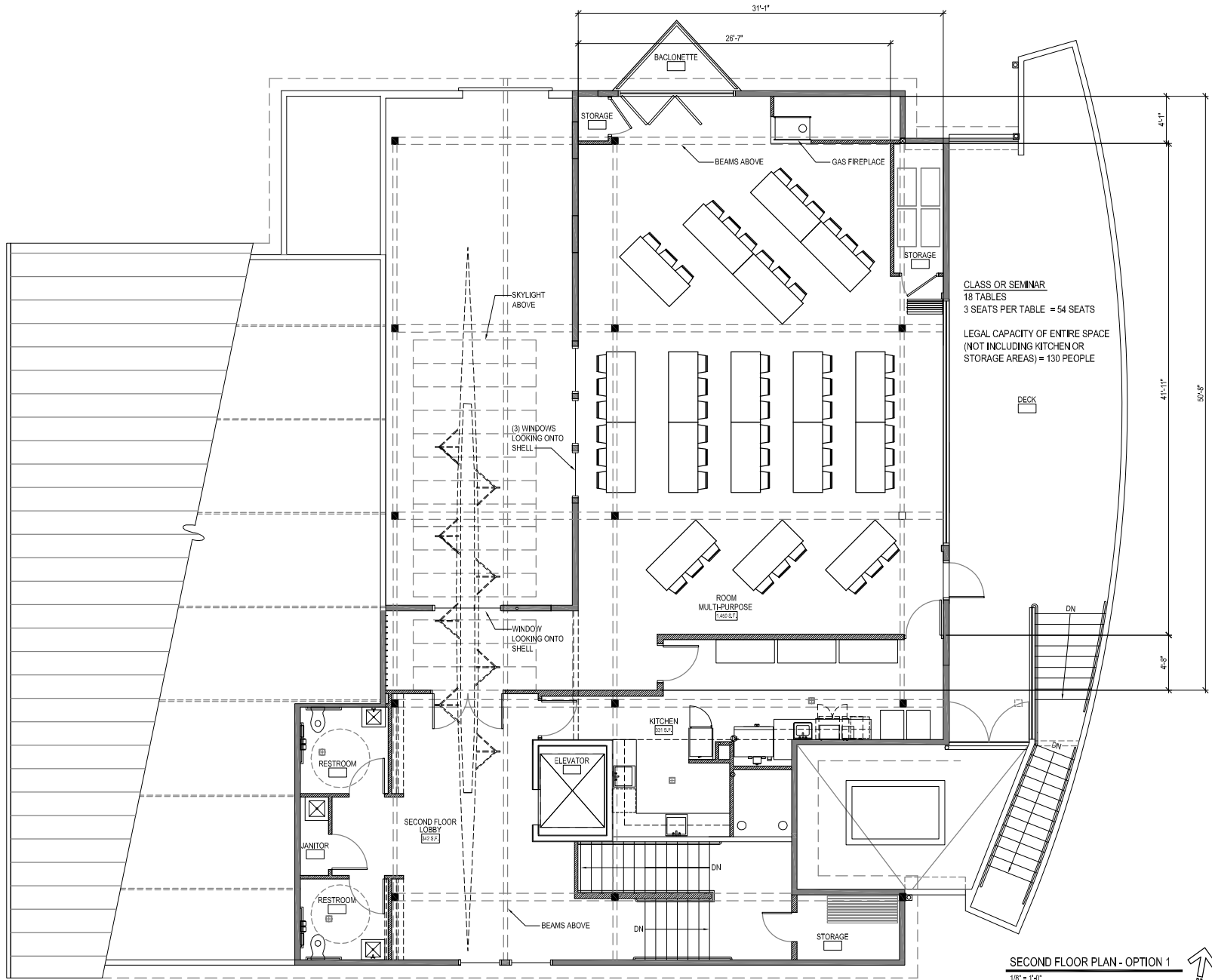




Arellano Christofides
 2000 1st Avenue
 Seattle, WA 98101-3100
 Phone: 206.461.1000
 Fax: 206.461.1004

The concepts, ideas and images depicted are the sole property of Arellano Christofides Architects, PLLC. They may not be reproduced or used without the express written consent of Arellano Christofides Architects. © ARELLANO CHRISTOFIDES 2011



CLASS OR SEMINAR
 18 TABLES
 3 SEATS PER TABLE = 54 SEATS

LEGAL CAPACITY OF ENTIRE SPACE
 (NOT INCLUDING KITCHEN OR STORAGE AREAS) = 130 PEOPLE

SECOND FLOOR PLAN - OPTION 1
 1/8" = 1'-0"



MT. BAKER ROWING & SAILING CENTER
MULTI-PURPOSE ROOM
 3800 LAKE WASHINGTON BLVD
 SEATTLE, WA 98118

APRIL 22, 2011